



Scan for more help!

**Simpled**

TA-SP Remote Controller

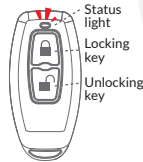
Security is just a touch away

User Manual

## REMOTE TA-SP

Model	TA-SP
Dimensions	60.6mm x 29mm x 11.7mm
Material	Plastic
Frequency	2.4GHz
Power supply	CR2032
Voltage	3V
Number of openings	>10000
Idle current	<2uA

### Button and light illustration



- Status light
  - Locking key
  - Unlocking key
- Unlocking: Press the unlocking key to unlock, the status light flickers.
- Locking: Press the locking key to lock, the status light flickers.
- Low power: The status light flickers slowly on locking/unlocking.

## Add Remote to a lock in APP

- 1 Activate the APP, select the lock you want to add a Remote.



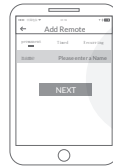
- 2 Press Wireless Remote.



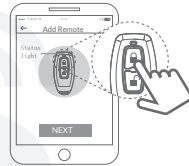
- 3 Press "Add Remote"



- 4 Select the time frame, fill in the name and press "Next."



- 5 Press the locking key for 5 seconds till status light flickers, then press "Next"

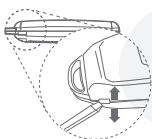


- 6 Press the device that has an "+" icon to complete.

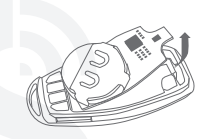


## Replace battery

- 1 Remove the cover of the Remote.



- 2 Remove the mainboard from the housing.



- 3 Replace the battery and reinstall the cover.



## Limited Warranty

- 1 For any defect in material and workmanship, the original purchaser of the product can:
  - 1) Return or ask for a replacement within 14 invoice days.
  - 2) Ask for free repair in 2 Years.
 This warranty does not cover defects caused by modification, alteration, misuse or physical abuse of the product.

### FCC WARNING

This device complies with part 15 of the FCC Rules. Operation is subject to the following two conditions: (1) this device may not cause harmful interference, and (2) this device must accept any interference received, including interference that may cause undesired operation.

Any changes or modifications not expressly approved by the party responsible for compliance could void the user's authority to operate the equipment.

NOTE: This equipment has been tested and found to comply with the limits for a Class B digital device, pursuant to Part 15 of the FCC Rules. These limits are designed to provide reasonable protection against harmful interference in a residential installation. This equipment generates, uses and can radiate radio frequency energy and, if not installed and used in accordance with the instructions, may cause harmful interference to radio communications.

However, there is no guarantee that interference will not occur in a particular installation.

If this equipment does cause harmful interference to radio or television reception, which can be determined by turning the equipment off and on, the user is encouraged to try to correct the interference by one or more of the following measures:

- Reorient or relocate the receiving antenna.
  - Increase the separation between the equipment and receiver.
  - Connect the equipment into an outlet on a circuit different from that to which the receiver is connected.
  - Consult the dealer or an experienced radio/TV technician for help.
- To maintain compliance with FCC's RF Exposure guidelines, This equipment should be installed and operated with minimum distance between 20cm the radiator your body: Use only the supplied antenna.

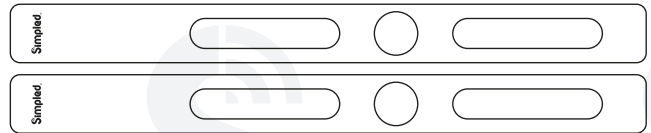
### Disclaimer

We continuously optimize products as new technologies and features are developed. For this reason, we reserve the right to make alterations to the products without prior notice.

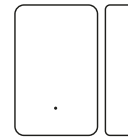


**Discover our Range of Products:**  
Simplified is a London-based tech company rolling out innovative IoT devices to elevate the smart home experience. Control your home with a range of smart security devices from Simplied. Whether it's a Smart Door Lock, a Camera Doorbell, Simplied put you in control of your home security.

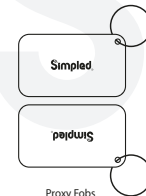
## Want more Accessories? Here is all you want:



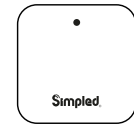
Covering Plates



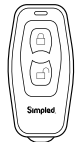
Door Sensor



Proxy Fobs  
(Contactless Key)



WiFi Bridge



Bluetooth  
Remote Controller



Phone Tags  
(Contactless Key)



Smart lock for  
a friend or family



Another Smart lock  
for other doors



More accessories?  
SCAN HERE

## Note

---



---



---



---



---



---



---



---



---



---



---



---



---



---



---



---



---



---



---



Easy Amazon Review  
Scan me!



## Contact us



**WOW!**

We're just happy that you're happy. If you don't know how to express your newfound joy, we've got a few suggestions...



Tell your friends and family



Share your experience by writing a review on Amazon



Connect with us on [simplified.tech](#)  
Facebook, Twitter and Instagram



**MEH.**

Our friendly customer service team will work hard to put a smile back on your face.

Here's how we can connect:

- [support@simplified.tech](mailto:support@simplified.tech)
- [Simplified.uk/support](http://Simplified.uk/support)