

Simplified[®]

Simplified, for peace of mind!

User Manual : SS-SP



Security is just a touch away



Scan for more help!

Simplified®

Simplified, for peace of mind!

User Manual : SS-SP



Discover our Range of Products:

Simplified is a London-based tech company rolling out innovative IoT devices to enhance the smart home experience. Control your home with a range of smart security devices from Simplified. Whether it's a Smart Door Lock, a Camera Doorbell.

Simplified put you in control of your home security.

Table of Contents:

Product Overview	1
What's Included	2-3
Specification	4
Factory reset	4
Installation	
Remove the old Handle	5
Change the Handle direction	6
Step 1 Install Mortice	7
Step 2 Spindle	7
Step 3 Fix the Sliding Screw Stub on the front panel	8
Step 4 Install the Front Panel	8
Step 5 Install Back Panel	9
Step 6 Install the Batteries	10
Operation	
Setting up the App (TTLock)	11-12
Unlock with the app	12
Add fingerprints	13
Add passcodes	14
Passcode Management	14
Create and Send e-Keys	15
e-Key Management	15
Create Admin	15
Programme Card, Proximity Fobs, Phone Tag Stickers	16
Unlocking Records	16
Pair Wireless Key Fob	17
Passage Mode	18
Import data from an old Simplified lock	18
How to turn off/on the lock sound?	19
Transfer lock to a new owner	19
Pair WiFi Bridge with the lock	20
WiFi Bridge Light Status	20
Pair WiFi Bridge with the APP	21
FAQ	22
Want more Accessories? Here is all you want	23
Contact Us	25

Please keep your backup keys in a safe and convenient place for peace of mind.

Ideally store the keys outside the property being secured, so they cannot be locked inside.

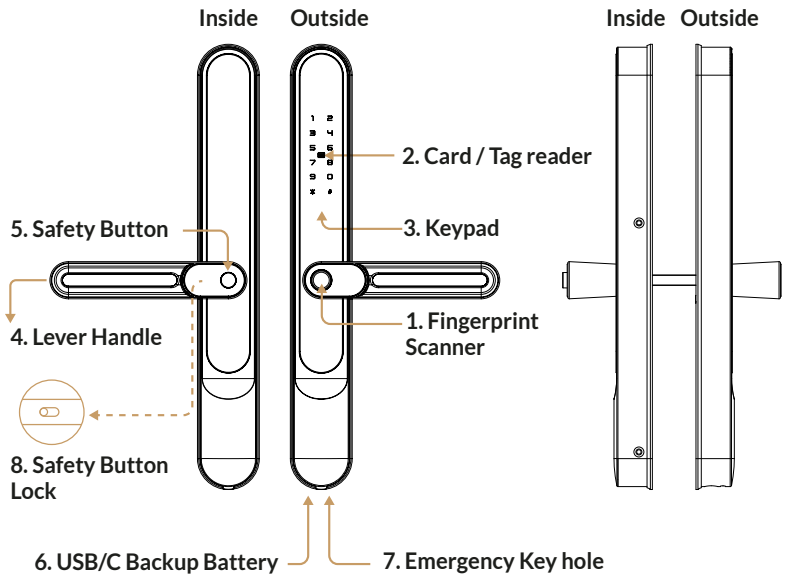
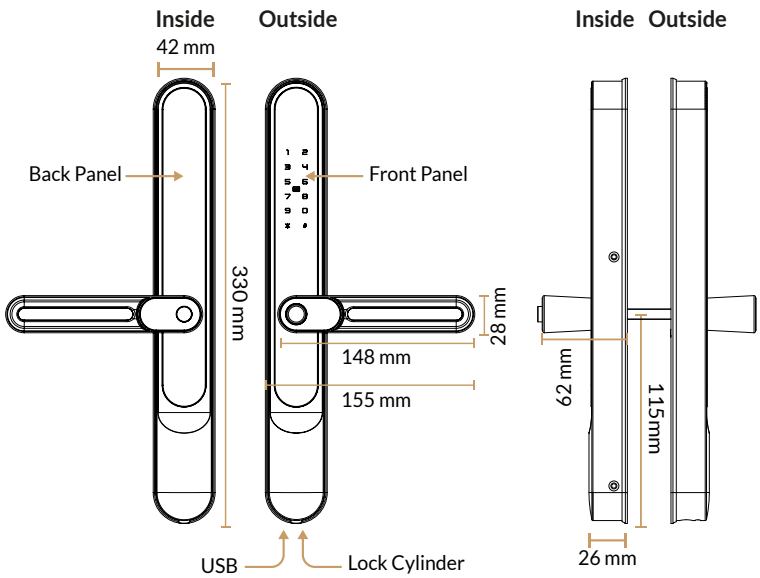
Be sure to follow all instructions to avoid injury or damage to your smart lock.

**For more information and support on Simplified Slim Door Lock, feel free to contact us:
support@simplified.tech**

Thank you for choosing the Simplified Slim Door Lock. Please read this manual completely before using the Simplified Slim Door Lock.

Simplified may change the functionality and design of the products without prior notice with the purpose of improving performance and quality!

Product Overview



Safety Button:

An additional feature to combat manipulated entry through a letterbox. Only if you push the "Safety Button" in before pushing the handle down, will the inner handle unlock the door from inside. If not pressed, the inner handle is not engaged.

Safety Button Lock:

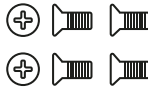
The "Safety Button Lock" is a slider button located behind the inner handle that can secure the "Safety Button" in place, allowing for normal handle operation from the inside without having to push the "Safety Button". To release the "Safety Button," slide the lock back.

What's Included?

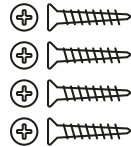
2x Sliding Screws



4x Mortice Screws
10x 5mm
(for Aluminum Door)



4x Mortice Screws
25x 4mm
(for Wooden Door)



1x spindle 60mm



1x spindle 65mm



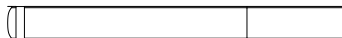
1x spindle 70mm



1x spindle 75mm



1x spindle 80mm



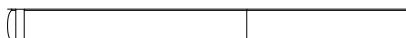
1x spindle 85mm



1x spindle 90mm



1x spindle 95mm



2x Screw Stubs: 35x 8mm



2x M5x35mm Screw



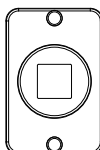
2x M5x50mm Screw



2x M5x60mm Screw



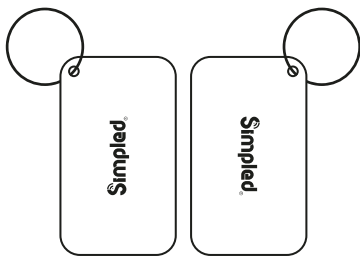
Spindle Alignment
Tool



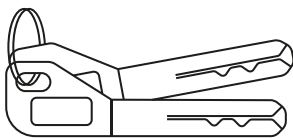
What's Included?



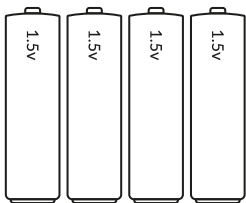
1x Phone Tag (Sticker)
Contactless Key



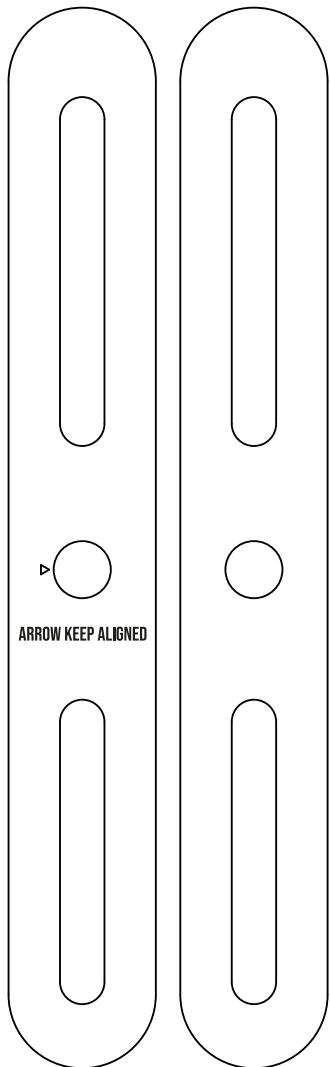
2x Proxy Fobs
Contactless Keys



2x Emergency Keys



4x Alkaline Batteries 1.5v

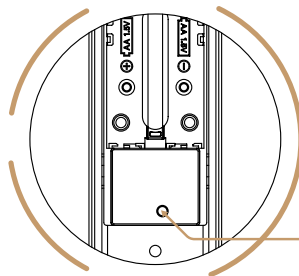


2x Rubber Gasket

Specification

Model	SS-SP	Doors Applicable	Aluminium Door Wooden & UPVC Door
Materials	Handle: ADC12 Panel: SS304	Working Voltage	6V/4 x AA Batteries
Weight	2.2 Kg	Door Thickness	40-80 mm (For more, you need Longer spindle and Screws)
Unlocking Methods	Smart Phone Apple Watch Fingerprint Passcode Proxy Fob / Phone Tag Emergency Key Alexa (needs gateway) Google Home (needs gateway)	Data Capacity	Fingerprint: 200 Passcode: 150 Fob/Stickers: 200 Unlimited eKeys
Colour	Silver - Black	Working Temperature	-10 to 55°C
Low Battery Alarm	Less than 4.8 v	Exterior Weatherproof	Yes

Factory reset



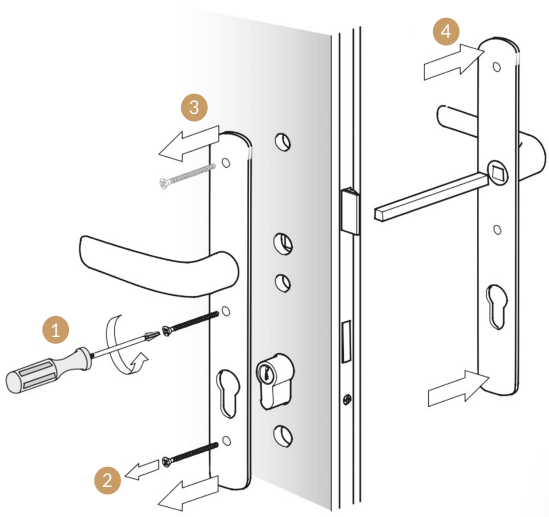
Reset Button

1. Open the battery cover.
2. Long-press the "Reset" button for 5 seconds .
3. Key in "000#".
4. Two Short beeps shows it's successfully reset.

Notice:

The previous passcodes, fingerprints, etc., should no longer work; Only the initial passcode: 123456#

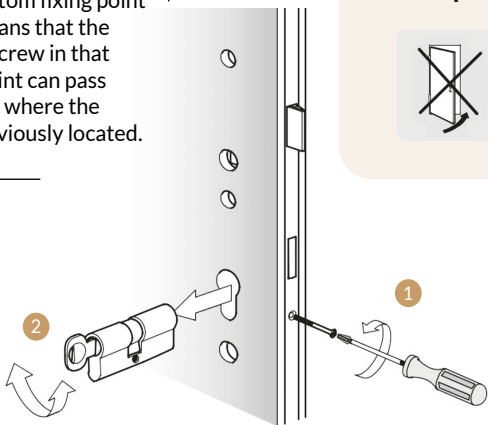
Remove the old Handle



If you have a separate euro lock cylinder present, you no longer need that existing cylinder, as the Simplified lock replaces it. Removing the cylinder leaves room for the bottom fixing point of the lock. It means that the screw stub and screw in that bottom fixing point can pass through the hole where the cylinder was previously located.



Do not close Door until installation is complete.



You can keep the old mortice if it's compatible with the Simplified Smart Lock*
Most Multipoint locks are compatible!

* May not be compatible with multipoints that have offset spindles.

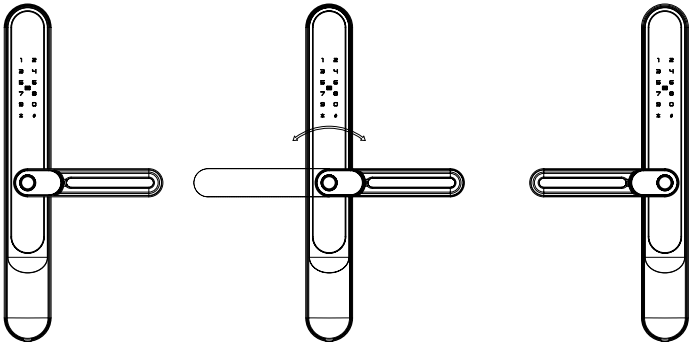
Contact us for more information: support@simplified.tech

Installation

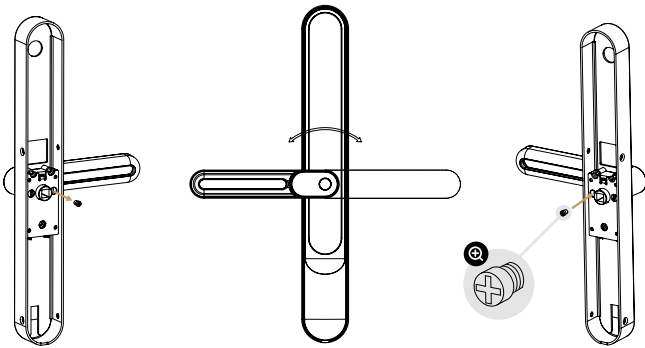
Change the Handle direction:

Outside handle:

Change the Outside handle direction by rotating it.



Internal handle:



1. Remove the Screw
behind the handle

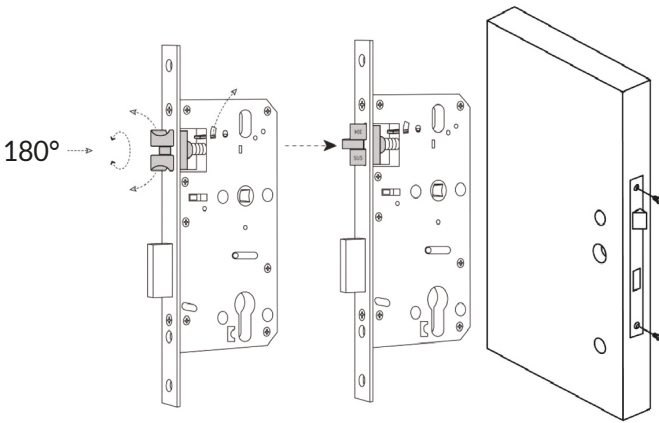
2. Rotate the handle
180 degrees.

3. Tighten the
Screw back.

Installation

Step 1 Install Mortice (Sold separately - Not necessarily needed)

If you your existing multipoint lock is compatible with the Simplified Smart lock, skip this step. Otherwise, check if the latch direction is correct for your door. should you need to change the latch direction, follow the steps in the left picture.



Step 1: Push upward and press it tightly

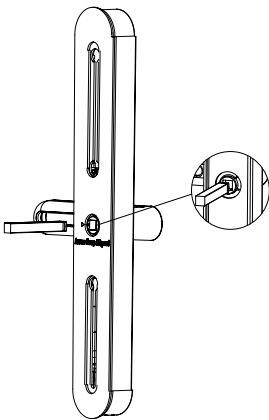
Step 2: Push the Latch Bolt into the Mortice

Step 3: Rotate the Latch Bolt 180°

Note: This step is only for those who have purchased the mortice for doors without a multipoint mechanism.

Step 2 Spindle

Find Proper Spindle and Screw Based on Door Thickness



Door Thickness	Spindle Size	Screw Size
40-45mm	60mm	35mm
45-50mm	65mm	35mm
50-55mm	70mm	35mm
55-60mm	75mm	50mm
60-65mm	80mm	50mm
65-70mm	85mm	50mm
70-75mm	90mm	60mm
75-80mm	95mm	60mm

1. Measure the thickness of your door.
2. Refer to the table to select the appropriate spindle and screws.
3. Click the correct size spindle into the spindle receptor on the outside panel from the grooved end.

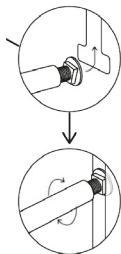
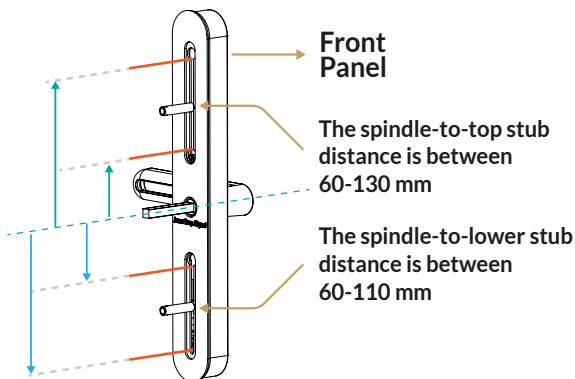


Scan the code to view instructions on
How to Remove the Spindle.

Installation

Step 3 Fix the Sliding Stub on the front panel

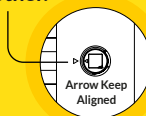
1. Fit the rubber gasket onto each panel
2. Attach the flat head sliding screws to the stubs and secure them in the top and lower positions to align with the door holes.



IMPORTANT:

Ensure the Spindle Receptor is rotated so that the arrows on both the Receptor and the Rubber Gasket face each other before installation.

Point arrows towards each other.



Step 4 Install the Front Panel

In addition to the central spindle hole, two additional holes are required to secure the lock using stubs and screws. One of these holes will also accommodate the cable.

For installations on old doors with existing locking mechanisms, the euro cylinder hole may be repurposed for the lower stub.

Installation Steps:

1. Measuring Distances on Your door:

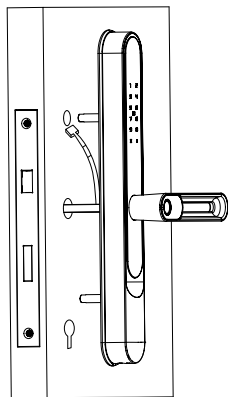
- Measure the distance from the top hole to the spindle.
- Measure the distance from the spindle to the lower hole.

2. Marking and Securing Stubs:

- Mark the correct positions for the stubs.
- Secure each stub at the marked locations.

An extra hole might need to be drilled if there is no room to pass the cable.

* When you want to drill a new hole for the cable, you might need to remove the multipoint mechanism to locate a safe spot to drill. To remove the multi-point lock, you need to unscrew several screws down its length.



Tip: Use masking tape to hold the handle in place.

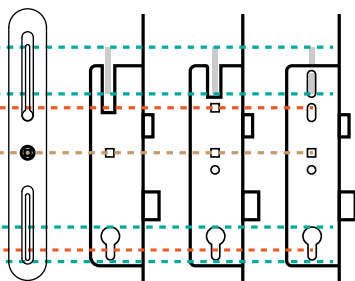
Clear space to drill the top hole

Top fixing

Spindle

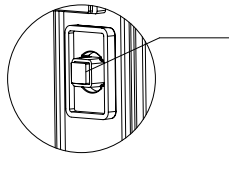
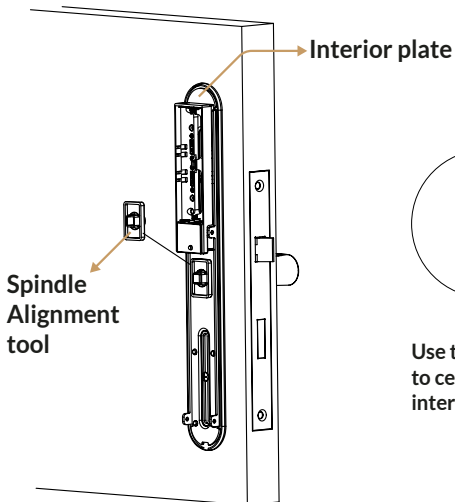
Clear space to drill the lower hole

Lower Fixing



Installation

Step 5 Install Back Panel



Use the Spindle Alignment Tool to centre the spindle in the interior plate holes.

Inner Handle:

1. Fit the Rubber Gasket to the inner panel.
2. Place the interior plate on the spindle and pass the cable through.
3. Align the spindle using the Spindle Alignment Tool.

Remove the spindle alignment tool after securing the screws.

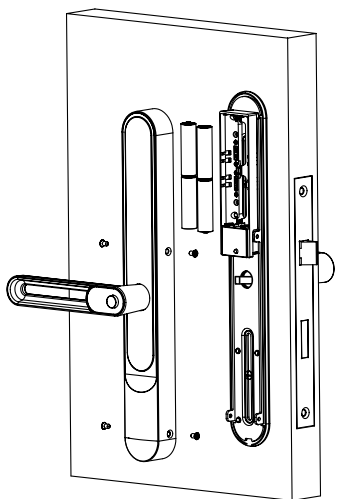
4. Secure stubs with both screws.
5. Connect the cable to the socket.
6. Remove the Spindle Alignment Tool.



Scan to check the installation video

Installation

Step 6 Install the Battery



7. Install four batteries.
8. Attach the back panel to the handle.
9. Tighten the four side screws in the panel.

These batteries are recommended:
A) Energizer AA Ultimate Lithium single use batteries
B) Procell AA Alkaline Batteries

Tips: Lift the handle to engage the deadbolts/hooks and then pull the handle down to disengage. The internal handle should always open the door.

TEST: Try pulling the outer handle down. It should move but do nothing. Then insert physical emergency key and turn. Try lifting the handle and then pull down. This time the latch/hooks should retract.

Note:

AUTOLOCK FEATURE

Your Simplified Smart Lock comes with auto-lock, a convenience and security feature which automatically relocks the smart lock a pre-determined number of seconds after you unlock it. The default factory setting for the auto-lock delay is five seconds, but you can change that delay to any length of time you want in the lock Settings sub menu.

LEAVING THE HOUSE ROUTINE

We recommend you lift the handles to engage the deadbolt or multi-points as you leave the house. Otherwise, the door may only be held on the single spring latch alone. If you have left the auto-lock setting at five seconds, you will then hear it relocking as you leave and you will know you are secure.

CLEANING

Please don't use chemicals for cleaning your lock as it may affect the guarantee. Just use a soft, damp cloth to gently clean without scratching the various surfaces.

Nice Job.

You have successfully installed the Simplified Smart Door Lock.



Scan to check the installation video

Operation

Setting up the Smart App

1. Download the "TTlock App" from the App Store or Google Play by either
 - Scanning the QR code
 - Searching the "TTLock" app
2. Sign up for a TTlock account, and add the smart lock to the device list

The Register screen features a blue header with a back arrow and the title "Register". Below the header are two tabs: "Email" (selected) and "Phone". The form includes fields for "Enter your Email", "Password", and "Confirm Password". A "Verification Code" field is present with a "Get Code" button. A note states: "Your password must have 8-20 characters, and include a minimum of two types of numbers, letters and symbols". At the bottom, there is a "Register" button and a link: "By Registering you agree to our Privacy Policy".

The Login screen features a blue header with the title "Login" and a "Register" link. Below the header is a blue hand icon with a key. The form includes fields for "Phone number/Email" and "Password" (with an eye icon for visibility). A "Login" button is centered below the fields. At the bottom, there is a link: "Forgot Password?".

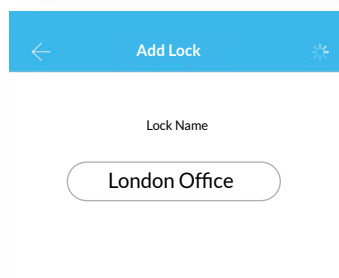
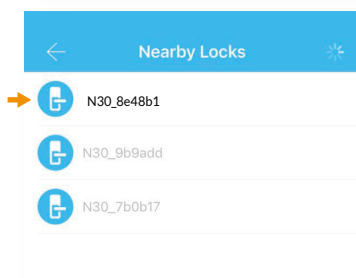
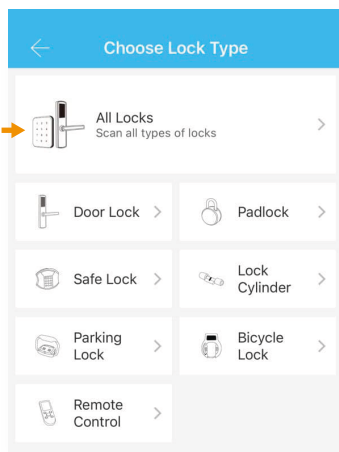
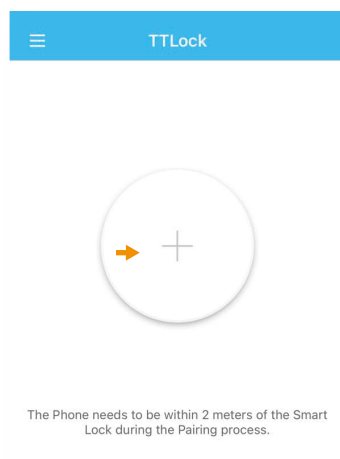
You can register an account by your email address or mobile number that is available in 200 countries around the world.



Scan for more help!

Operation

3. Activate the lock's Bluetooth by touching the Lock's keypad
4. Tap on "+ Add Lock" and select your lock type. Press on "All Locks" if you are not sure.
5. In the "Nearby Locks" list, select the appeared lock. Please make sure you are near the lock in the Bluetooth range.
6. Rename the Lock "Sweet Home, Spain Villa, London Office, ..."



Notice: Generally, the passcode for a lock that has not yet been added is 123456

Unlock with the app

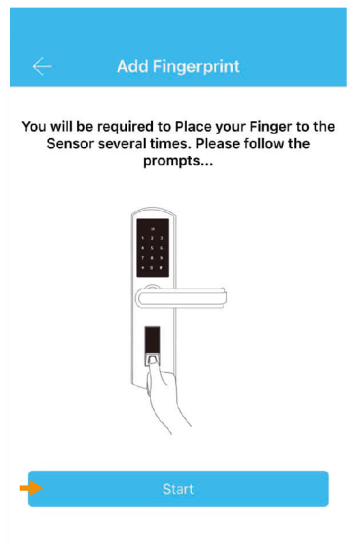
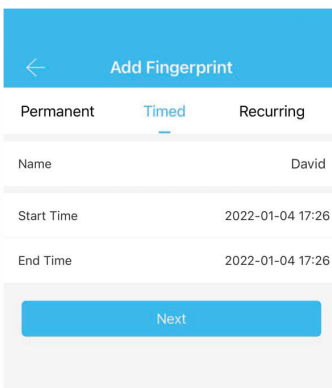
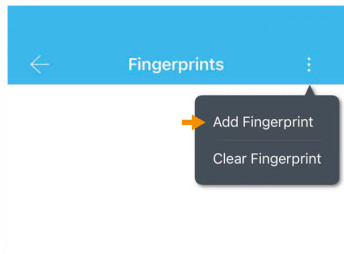
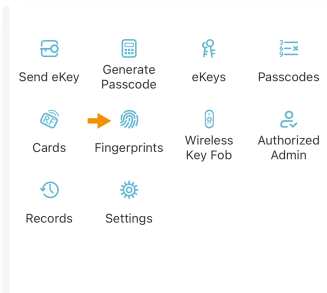
Try to open the lock by tapping on the "Lock Icon". Please ensure there is no problem with Bluetooth communication, and the phone is within the 5-metre range of the Simplified Slim Smart Lock.

Add Fingerprints

To add a new fingerprint:

Choose whether you want to create limited-time or permanent access.

1. Select Fingerprint from the lock screen in the app
2. Tap on the three dots
3. Select Add Fingerprint
4. Choose a name for later reference “ It helps you to recognise the fingerprint in the unlocking reports”.
5. Then start and press your fingerprint four times on the fingerprint sensor
6. You should see your fingerprint added to the list on the app successfully.
7. Test the fingerprint.



Add Passcodes (PIN codes)

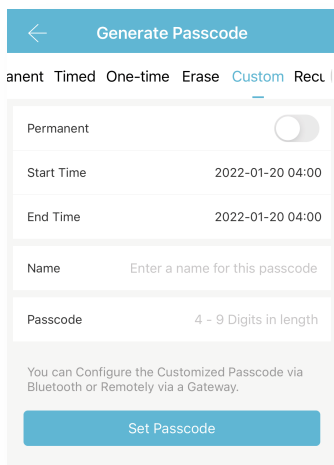
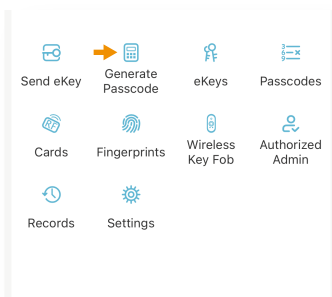
You can create different passcodes types to open the Simplified slim lock: permanent, time-limited, OTP(one-time passcode), cycle or custom. You can easily share the passcode with other users via SMS, Email, WhatsApp.

You can create, limit, share and delete a passcode without a WiFi bridge using the app when you are near the lock.

But for example, If you want to eliminate a passcode remotely, you need a Bridge. You can learn more about bridge features in its section.

Gain access with Passcodes:

1. Touch the keypad with your palm or back of your fingers to wake up the lock.
2. Enter the generated passcode. (Before setting new passcodes, the default code is 123456#)
3. Press #
(The Hash key is used like an Enter button after entering the passcode)



Passcode Management

Click on "Passcodes". In this section, the Admin user can

1. Change, delete or reset passcodes.
2. Review the unlock records of passcodes.

Create and Send eKeys

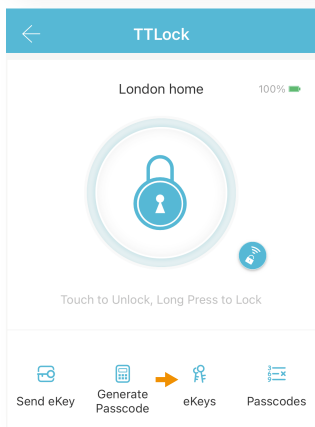
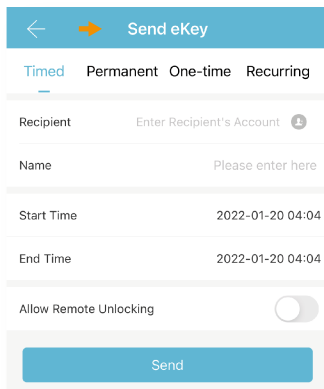
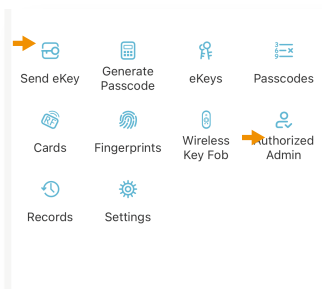
By selecting the “Send eKey” as shown in the figure, you can create and share an electronic key with your friends, family, maid, dog walker or your AirBnB guests.

Create and Send eKeys

By selecting the “Send eKey” as shown in the figure, you can create and share an electronic key with your friends, family, maid, dog walker or your AirBnB guests. eKeys are available in different types: Permanent, Time-Limited, One-time and recurring. For maximum flexibility start with the Custom option which allows you to fine tune the access privileges as you create the eKey. All uses of the eKey will be logged by date and time in the Records section of the app.

To use an eKey, the person receiving it needs to download the TTLock app, register an account, receive back a security code and then paste that code into the app to activate it. Once they have done that they will see the eKey you have sent them in the app in their phone. So their phone becomes their key!

You can also authorise a user as sub Admin with the ability to create passcodes an eKeys themselves, see the instructions in the Authorised Admin section further down the page.



eKey Management

Click on eKeys. In this section, the Admin user can

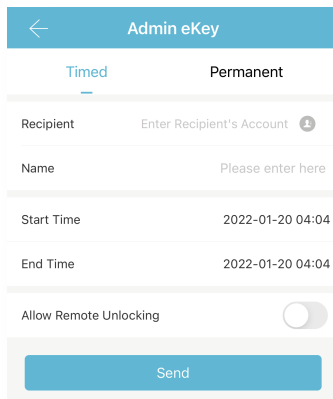
1. reset or delete eKeys.
2. review the access records.

Create Admin

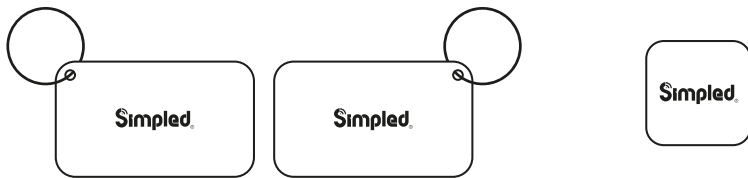
With this feature, you can assign a new timed or permanent admin to have the same level of access to the lock.

For example, your receptionist or even your guest will be able to add new users and even register their own fingerprint on the smart lock, up to the time their users are valid.

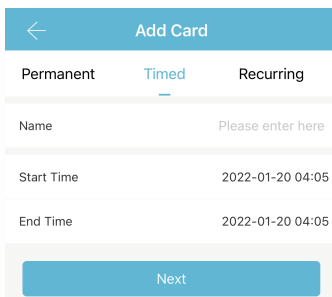
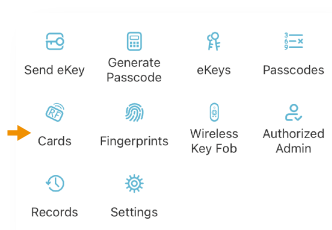
∴ 15 ∴



Programme Card, Proximity Fobs, Phone Tag Stickers:

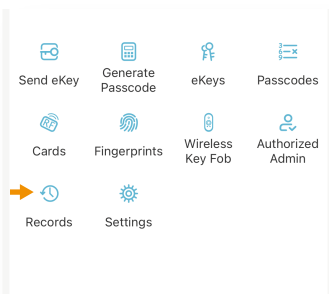


Before a proxy fob or sticker can open the lock, it needs to be programmed first. Fobs/Stickers can also be Permanent or Limited by time.

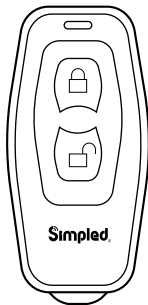


Unlocking Records

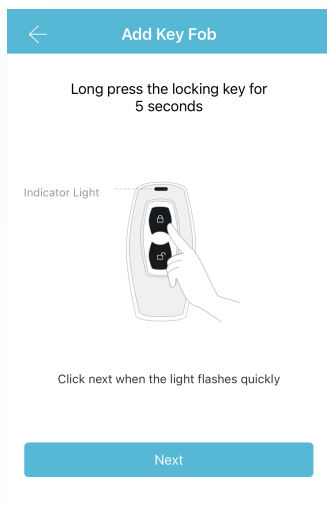
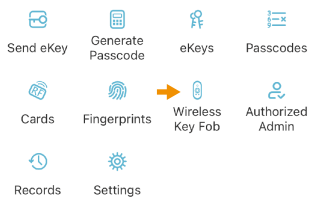
Tap on "records". In this part, you can review all the unlock records



Pair Wireless Key Fob (Bluetooth Remote Controller)



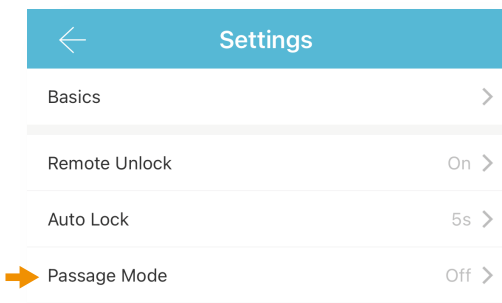
1. Tap on "Wireless Key Fob".
2. Add Key Fob
3. Use Permanent/Timed/Recurring Tab.
4. Long Press the Locking Key on the Remote controller for 5 seconds.
5. Tap "Next" when the light flashes quickly.



Activate Passage Mode

Passage Mode puts the door in a fully open and unlocked mode.

1. Choose the lock
2. Tap on "Settings"
3. Select "Passage Mode"
4. Turn on this mode and press Save
5. Passage mode is not activated until you unlock it once with the app
6. If you Force Lock the device while in passage mode (by using the app or by holding down the # key), it will lock, but it will then revert to Passage Mode the next time it is unlocked
7. To come out of Passage mode you need to turn it off in the app.

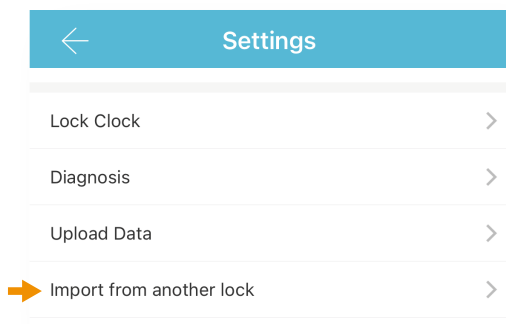


You can long-press # to force-lock the Simplified lock! It's the same when the auto-lock feature is off; you can long-press # to lock the door.

Import data from an old Simplified lock.

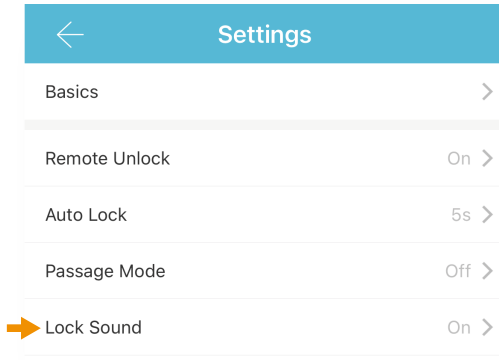
To transfer data from an old Simplified lock to a new one you can follow these steps:

1. Choose the new lock on the app.
2. Tap on "Settings"
3. Select "Import from another lock"
4. Choose your old lock from the list.




How to turn off/on the lock sound?

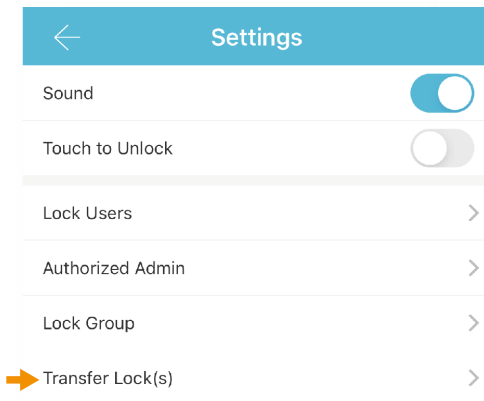
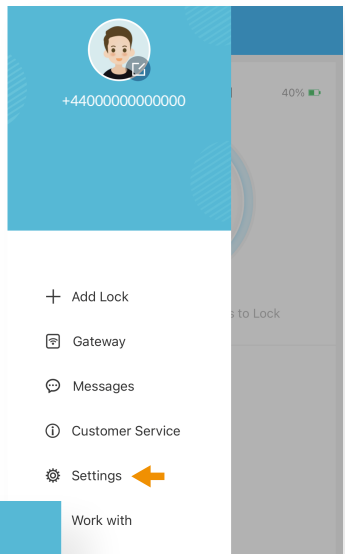
1. Open the app.
2. Tap on the lock.
3. Choose "Settings".
4. Disable/Enable the Lock sound.



Transfer lock to a new owner

1. Open the app
2. Tap on the  (Top Left)
3. Select "Settings"
4. Tap on "Transfer Lock(s)"
5. Select the lock(s) and press Next
6. Enter the registered email address or phone number used to register the new owner's TTLock account, and press Next.

Notice: The selected lock(s) will be permanently transferred.

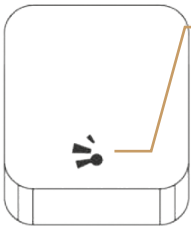


WiFi Bridge Pairing

The Simplified Smart WiFi Bridge (or Gateway) is a connection between Simplified Smart locks and your WiFi router, and through that to the whole internet. With the bridge you can:

- Open your lock from anywhere
- Remotely read the lock operation records, including, fingerprint, passcodes
- Calibrate the lock clock remotely
- Remotely delete and modify passcodes
- Use the Simplified lock with your Alexa
- Use the Simplified lock with your Google home

Light Status



When the WiFi Bridge is powered on:

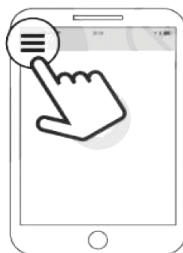
- Light Flashes alternately in Red and Blue: Stand-by mode, ready for pairing
- Blue light: Working mode
- Red Light: Network failure

Pair the Bridge (Gateway) with APP

1 Activate the APP



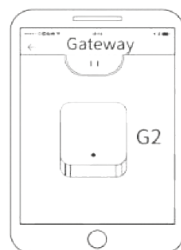
2 Pres "☰"



3 Select (Gateway)

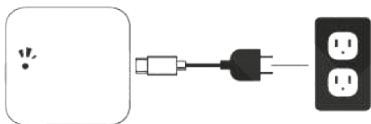


4 Select (G2)



Pair the Bridge (Gateway) with APP

- 5 Plug in the Gateway and power it on, while the light Flashes alternately in red and blue



- 6 Press “+” sign



- 7 Add (Gateway) 8 Select the network and fill in the password



- 9 Add complete

Notice: If it times-out, please turn off and on, and try it again.

After pairing the WiFi Bridge, please turn on "Remote Unlock" on the TTlock settings.



Scan for more comprehensive TTlock app manual.

FAQ

1. Can I keep my previous multipoint lock?

We designed it to fit most existing 'lever up' multipoint mechanisms. These are typically found on UPVC doors. So in 95% of the cases, the answer is yes.

There is no need to replace your current mortise.

Get in touch if you need more information.

Support@simpled.tech

2. I just installed the door, and although the locks verified my access, nothing happens when turning the handle from outside.

It can be because of the wrong direction in the arrow on the spindle.

Please review the installation

instruction (Installation Section - Installing the Spindle)

3. The spindle receptor used to rotate freely, but now it is frozen. Why?

Change the battery and try to gain access with a passcode or via the app; Now, the motor should disengage the spindle, and it should rotate freely.

4. I can not change the passcode. It says Operation failed.

First, ensure your smartphone is within 2 meters of the cylinder when setting the passcode. If it is, turn off your smartphone's Bluetooth for 10 seconds and turn it on again.

5. After installation, I touched the keypad, but there was no response. What is the reason?

A) Check if the battery is placed correctly and if it has enough power.

B) Remove the back panel and check if the cable is connected properly.

C) Unmount the lock and make sure the cables are not squeezed or damaged.

6. What's the purpose of the Auto-Lock?

To set a timer for the Smart lock to be automatically locked after each time you unlock it.

7. I had a problem registering my fingerprint.

Check if your fingerprints are clean without any dirt or wear. Clean the sensor with a soft cloth making sure there's no oil, stains, etc.

8. What is the reason the batteries ran out?

It can be due to long standby or a Short Circuit caused by a damaged cable.

9. Why can't I unlock the lock after activating the passage mode?

The lock needs to be unlocked once, and only then, the passage mode will be activated.

10. What happens if you enter the wrong password into the lock too many times?

After five failed attempts to enter your passcode, your lock will be disabled for 5 minutes. You can try other unlocking methods.

11. How can I read the operation records?

1. Open the app

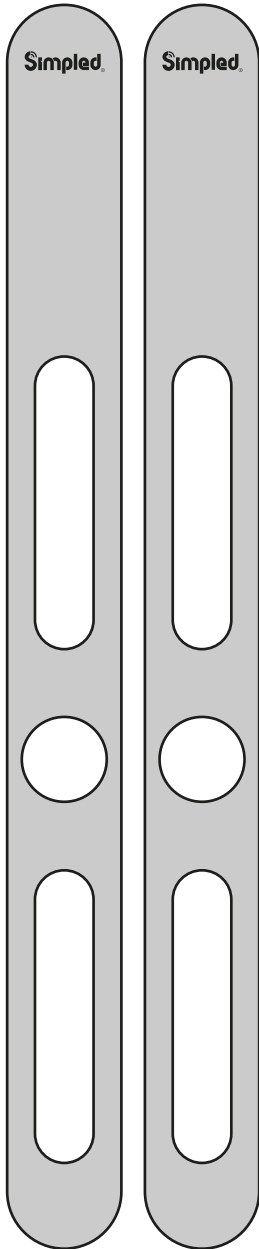
2. Select your lock

3. Select "Records"

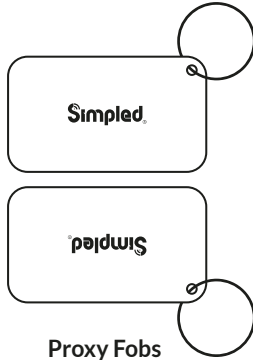


For the latest FAQ and support page, please scan this Code:

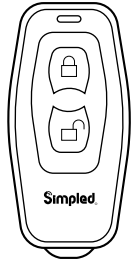
Want more Accessories? Here is all you want:



Covering Plates



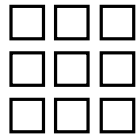
Proxy Fobs
(Contactless Key)



Bluetooth
Remote Controller

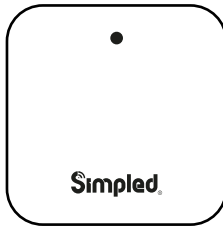


Phone Tags
(Contactless Key)



Another Smart lock
for other doors

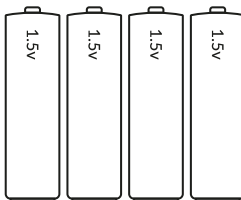
Do you need another
Smart Lock for other
doors?



WiFi Bridge



Smart lock for
a friend or family



Alkaline AA Batteries



More accessories?
SCAN HERE

Contact us:

Note:

1. We provide you with a two-year warranty from the date of purchase.
2. This warranty service is valid for customers in any country in the world.
3. For more help please contact us:
Simpled.uk/support



WOW!

We're just happy that you're happy.
If you don't know how to express your newfound joy, we've got a few suggestions...



Tell your friends and family



Share your experience by writing a review on Amazon

OR



Connect with us on simpled.tech
Facebook, Twitter and Instagram



MEH.

Our friendly customer service team will work hard to put a smile back on your face.
Here's how we can connect:

✉ support@simpled.tech

🌐 Simpled.uk/support



Easy Amazon Review
Scan me!