

Scan for more help!

**Simplified**

DA-SP Door Sensor

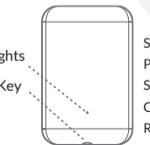
Security is just a touch away

User Manual

## DOOR SENSOR DA-SP

Model	DA-SP
Dimensions	41mm x 27 mm x 11.5 mm 41mm x 10 mm x 11.5 mm
Material	ABS plastic
Frequency	2.4GHz
Battery model	CR2032
Voltage	3V
Battery life	2 years (10 times a day)
Stand-by current	<5uA
Induction range	<22mm

### Lights



Status	Lighting
Pairing	Fast flickering
Sensor close/open	Flicker once
Close/open on low power	Flicker 3 times
Reset to default setting	Light up for 1 seconds

## Add door sensor via APP

1. Activate APP, select the lock on which you want to add a door sensor
2. Tap "Settings", "Door sensor"



Tap "Add door sensor", then press the reset button on the door sensor for 2 seconds. Tap "next" after the light starts flickering



4. Tap the device with a "+" and finish the adding process.



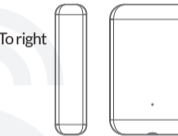
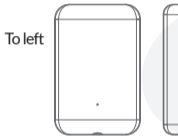
Please repeat above procedures 2-3 times if the door sensor can't be added, or reset the door sensor and try again.

### Reset to default settings

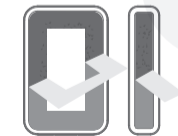
Press the reset button on the door sensor for 10 seconds. After the light is on for 1 second, the device is reset to default settings.

## Installation

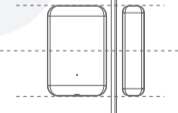
1. Decide the opening direction of the door



2. Tear the cover of the glue on the door sensor



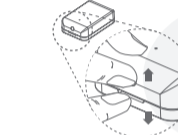
3. Clean the surface on which the door sensor is to be installed, align the sensors and glue them tightly on the door.



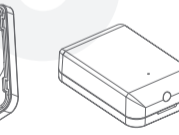
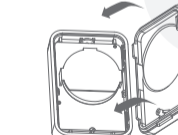
Please note that the maximum induction distance of the door sensor is 22mm.

## Replace battery

1. Remove the shell.
2. Pull out the used battery and replace with a new one.



3. Reinstall the shell.



## Limited Warranty

1. For any defect in material and workmanship, the original purchaser of the product can:
  - 1) Return or ask for a replacement within 14 invoice days.
  - 2) Ask for free repair in 2 Years.
 This warranty does not cover defects caused by modification, alteration, misuse or physical abuse of the product.

### FCC WARNING

This device complies with part 15 of the FCC Rules. Operation is subject to the following two conditions: (1) this device may not cause harmful interference, and (2) this device must accept any interference received, including interference that may cause undesired operation.

Any changes or modifications not expressly approved by the party responsible for compliance could void the user's authority to operate the equipment.

NOTE: This equipment has been tested and found to comply with the limits for a Class B digital device, pursuant to Part 15 of the FCC Rules. These limits are designed to provide reasonable protection against harmful interference in a residential installation. This equipment generates, uses and can radiate radio frequency energy and, if not installed and used in accordance with the instructions, may cause harmful interference to radio communications.

However, there is no guarantee that interference will not occur in a particular installation.

If this equipment does cause harmful interference to radio or television reception, which can be determined by turning the equipment off and on, the user is encouraged to try to correct the interference by one or more of the following measures:

- Reorient or relocate the receiving antenna.
- Increase the separation between the equipment and receiver.
- Connect the equipment into an outlet on a circuit different from that to which the receiver is connected.
- Consult the dealer or an experienced radio/TV technician for help.

To maintain compliance with FCC's RF Exposure guidelines, This equipment should be installed and operated with minimum distance between 20cm the radiator your body. Use only the supplied antenna.

### Disclaimer

We continuously optimize products as new technologies and features are developed. For this reason, we reserve the right to make alterations to the products without prior notice.

